

# ***The Garden Clubs of Illinois, Inc.***

## ***Awards Guide 2022***



***The Garden Clubs of Illinois, Inc.  
188 Industrial Drive Suite 120  
Elmhurst, IL 60126-1608***

***Tel: (630) 617-9269***

***Email: [gardenclubsill@aol.com](mailto:gardenclubsill@aol.com)***

***Website: [www.gardenclubsofillinois.org](http://www.gardenclubsofillinois.org)***

***Revised August 2022***

**Awards Guide for  
The Garden Clubs of Illinois, Inc.**

**Table of Contents**

<b>Deadlines for Awards .....</b>	<b>3-4</b>
<b>Application Submission Requirements (NEW) .....</b>	<b>5</b>
<b>Awards Application “Sample” Document .....</b>	<b>7-9</b>
<b>Awards – How do you begin? .....</b>	<b>11</b>
<b>State Award Rules .....</b>	<b>11</b>
<b>Club Yearbooks – Criteria for Preparing and Scale of Points.....</b>	<b>12</b>
<b>Flower Show Books of Evidence Info .....</b>	<b>13</b>
<b>Publications Scale of Points .....</b>	<b>14</b>
<b>GCI Listing of Awards</b>	
<b>Flower Show Awards .....</b>	<b>15-16</b>
<b>Civic Project Awards.....</b>	<b>16-18</b>
<b>Conservation Awards .....</b>	<b>18-19</b>
<b>Youth Activities and Annual Youth Related Awards .....</b>	<b>20</b>
<b>Garden Club Awards.....</b>	<b>21-23</b>
<b>Publications Awards.....</b>	<b>22</b>
<b>Garden Therapy Awards .....</b>	<b>23</b>
<b>Membership Awards .....</b>	<b>24</b>
<b>Special Awards and Presidential Citations .....</b>	<b>24</b>

**Use the information in this booklet when applying for awards.**

Revised when necessary, with regular updates. Distributed via the following  
website:

**[gardenclubsofillinois.org](http://gardenclubsofillinois.org)**

## Important - Award Deadlines

(Entries **MUST** be postmarked by deadline.)

### October 1

#### **Award #25 - LANDSCAPE DESIGN COUNCIL AWARD**

**You must obtain an entry form from the Landscape Design Council Chairman before the project begins. Application and Award Application Coversheet are due on October 1 to the Landscape Design Council Chairman listed in *Garden Glories*.**

**Award #60 - YEARBOOK:** Two types of awards are given for yearbooks. They are judged separately.

- a. **DISTRICT** - Send one copy of your garden club yearbook to your District Director/Awards Chairman.
- b. **STATE / CENTRAL REGION** - Send a second yearbook with the GCI Award Application Coversheet to the GCI Awards Chairman. The committee will select winners according to club size (conforming to NGC membership divisions). See page 13 for instructions and scale of points for preparing a club yearbook.

### November 1

**All Award Applications are due for club projects held on or before October 20. Every award application needs to include a GCI Award Application Coversheet with the exception of Flower Show Achievement Awards, #62 Club Achievement #63 Club Horticulture.**

**All awards must be emailed as a PDF with the exception of Flower Show Achievement, Publications, Yearbook, Club Achievement and Club Horticulture.**

**REMINDER: Clubs are required to notify GCI Awards Chairman of intent to submit awards for events held after October 20 by November 1.**

### December 15

**Award #62 – Club Achievement**

**Award #63 – Club Horticulture**

Note: The forms for these awards are posted on the GCI Website. Fill out PDF forms completely, adding up your club's total points. Please provide required information (where indicated). Forms must be mailed to the GCI Awards Chairman.

**Award Deadlines - (Continued)**  
(Entries **MUST** be postmarked by deadline.)

**January 1**

**Award #9 – Judges Council Flower Show Schedule** - Obtain award application form and send entry to the current Illinois Judges Council Chairman.

**All other Award Applications for your club events that are held after OCTOBER 20.** See **REMINDER** comment under November 1.

**January 10**

**These GCI special Flower Show Awards do not require a Book of Evidence. Complete the appropriate GCI award forms for the following:**

**Award #10 – Flower Show Educational Exhibit**

**Award #12 – (A.) Flower Show Table Design or  
(B.) Design Excellence for Creative**

**Design Award #13 – Staging Award for a Standard Flower Show**

Note: President's mailings, **GardenGlories**, and **The National Gardener** and appropriate websites will provide further award information and updates. All applications, other than some special awards, must be sent directly to the GCI Awards Chairman.

**Note: Please do not submit awards directly to National Garden Club (NGC), Inc. or Central Region Garden Clubs (CR), Inc. unless specifically stated appropriate award listing.**

## SUBMISSION REQUIREMENTS

Requirements (if applicable)

1. The actual award submission could potentially become a 3-page document (sample on pages 7-9). GCI State Award Application Coversheet must accompany each award entry and is not included in page count. Documents may be created in any word processing program or presentation programs such as PowerPoint or Publisher, and must be saved as a PDF before emailing.
2. Applications, except Flower Show Achievement Awards, will not be returned unless postage-paid addressed return envelope is included with publication awards.
3. **ALL** Applications, except Flower Show Achievement Awards (#1-8), Club Achievement (#62), Club Horticulture (#63), Yearbooks, and Publication awards (#81, #82, #83), **MUST BE emailed as a PDF** to **gci2022awards@gmail.com** by the deadlines listed.  
**EACH AWARD APPLICATION MUST BE EMAILED SEPARATELY.**
4. For Yearbooks, Flower Show Achievement Awards, Club Achievement, Club Horticulture, and Publication Awards, mail the awards and/or forms to: David Robson, GCI Awards Chair, 1515 W. Fayette Ave., Springfield, IL 62704-2306.  
DO NOT MAIL OTHER AWARDS.
5. Forms are available on the GCI website, [gardenclubsofillinois.org](http://gardenclubsofillinois.org).
6. The GCI Award Application Coversheet is not needed for Flower Show Achievement Awards, Club Achievement (#62) and Club Horticulture (#63).
7. Follow the format listed on pages 8-10 of this Guide.
8. Yearbooks: Please complete the necessary information using the GCI State Award Application Coversheet. Firmly clip form to the inside front cover of your yearbook. Send 1 yearbook entry to the GCI Awards Chairman, and 1 yearbook entry to your District Director/District Awards Chairman.
9. Publications: Submit each entry in an envelope with both the GCI State Award Application form and GCI State Award Application Coversheet. Submit one copy/set of requirement publications. Submit entries to the GCI Awards Chairman postmarked by award deadline.

## Membership Divisions

### Garden Membership by Size

State award applications will be judged according to club size, determined by number of members for whom GCI dues are paid, including Active, Associate, Inactive, Honorary, etc. **(NEW to match NGC)**

- A. **Small Club: 20 members and under**
- B. **Medium Club: 21-50 members**
- C. **Large Club: 51+ members**

### Helpful Hints in completing your award form:

Presentation – Neat, concise, includes all required information

Achievement – Scope of project; need and fulfillment; benefit; accomplishment; comprehensiveness of work; activities to attain goals; evaluation of goals reached; educational; prior planning; brief history if continuing project; financial report with expanses and sources of income including in-kind; other.

Participation – Size of club; involvement of members including total number of volunteer hours; community, government agencies, professionals, youth, residents in facilities, other involvement. *Number/percentage of club members involved is essential.* Be sure to include members in photo documentation.

Record/Documentation - Supporting data (as applicable)' clear, well-labeled and neatly attached; before and after photographs; landscape plan; letters of appreciation; community awards; newspaper/magazine articles, radio, or TV script, etc. Photocopies permitted.

## Page GCI Award Application : Sample Document

Please review a completed "sample" Awards Application on the following pages. Notice the landscape designs and photographs which help complete the 3 pages. The Award Application Coversheet does not count as a page.

- Application is limited to three printed pages.
- Application will not be returned.
- Please make copies (of all other award entries) for your files.
- **ONLY GCI Awards Chairman** is to send state winners to NGC Awards Chairmen postmarked no later than **January 15**.

## **THE 2022 GCI AWARDS COVERSHEET MUST ACCOMPANY ALL SUBMISSIONS**

**(with exceptions noted above)**

(This form matches NGC's submission, which makes it easier for GCI awards to be forwarded.)

**Award #:** Sample 1

**Award Name:** Sample Garden Project

**Award Submitted by:** Happy Diggers Garden Club

**Number of members**

**in club:** #####

[Enter name exactly as it should appear on any award received] **Date:**

**Please complete each topic, if applicable. Use numbering as below when completing form.**

**1. New project:** Yes \_\_\_ No X **Beginning date:** 3/20/2022 **Completion date:** 8/22/2022

### **2. Brief summary and objectives of project:**

*A Healing Garden was designed and planted in the local park. This project was Phase 3 of an on-going project. Objectives included using plants traditionally used for medicine and healing in a pleasing formal arrangement and to create a place for spiritual healing through contemplation, meditation, and reflection. By locating the garden in a local park with appropriate signage, this project also brings visibility to community projects done by garden clubs working with youth.*

### **3. Involvement of club members, other organizations, etc.:**

*This project was planned by a committee of 4 garden club members, one city planning official, a local landscaper, and a nursery owner. The site preparation was done by the county with help from a local boy scout troop. Planting was done by our garden club as well as two local girl scout troops. A total of 37 garden club members and 23 youth were involved in the project.*

### **4. Project expenses and means of funding:**

*We received one NGC youth projects grant of \$1000. Donations from club and community members resulted in an additional \$5,000. We also held a fund-raising design luncheon which raised an additional \$2,500 for a total of \$8,500. Club members donated 120 hours of time. The county donated use of heavy-duty equipment including a Bobcat and the laborers.*

Expenses totaling \$8500 were as follows:

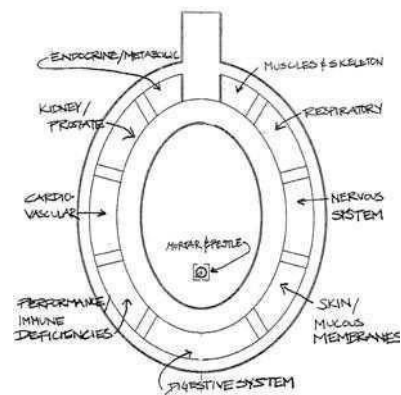
- \$1800 Soil Amendments (compost, peat moss, etc.)
- \$1000 Mulch
- \$1500 Pavers
- \$ 850 Bench
- \$1000 Shrubs - Yew (*Taxus baccata*) - 10 @ \$100 each
- \$ 350 Shrubs – Butterfly bush (*Buddleia spp.*) - 10 @ \$35 each
- \$2000 Herbs (200 @ \$10 each) such as rosemary (*Salvia rosmarinus*), lavenders (*Lavendula spp.*) coneflowers (*Echinacea purpurea*), butterfly flower (*Aesclepias tuberosa*), salvias (*Salvia spp.*)

### 5. Continuing involvement, follow-up, maintenance:

The Happy Diggers Garden Club provides 3 volunteers each month to dead-head and weed. The county is responsible for watering and site maintenance such as leaf removal, raking, etc. This was the final phase of this project.

### 6. Attach or insert photos, digital photos, and/or landscape plan (does not need to be professionally drawn).

Landscape plan showing the areas to be planted in medicinal herbs related to each system of the body



Landscape Plan for entire project. Phase 3 completed the yew hedge on the right side as well as 2 sections of the outer circle.





*The garden at the start of Phase 3 of the project in March 2022. The pavers have been placed, soil preparation completed, and herbs and shrubs planted.*



*In early summer 2022, the herbs are beginning to fill in around the bench. The pavers weave their way through the garden and signage is placed to identify the plants and their medicinal use.*



*Late summer 2022*

*The yew hedge separates the healing garden from the rest of the park. The lavender and purple coneflowers surrounding the bench create a tranquil and fragrant spot for park visitors to sit and reflect.*



## AWARDS

### HOW DO YOU BEGIN?

Each club should have an Awards Chairman, someone who will study this Awards Guide and decide which awards fit into the club's program and projects. The Awards Chairman in turn, encourages club members and **specific chairmen** to cooperate in meeting the awards requirements.

Frequently, the clubs that win the most awards are clubs **in which one individual is responsible for award applications as a method of achieving recognition for club activities. This person may be the President, the Awards Chairman, or an assigned Project Chairman.**

Activate the club's awards program in the following ways:

1. Study the on-going and new activities of the club.
2. Consider which awards coincide with your club's programs.
3. **Plan ahead:** Begin immediately once a project is decided upon by collecting information and photos of: Goals of the project, budget, communication, publicity, photos, community, and club members participating, etc. Collecting this info along the way makes it easier to submit the award. When your project is close to completing, review your data to see if it is in accordance with the specific award. Carefully study award requirements in this Award Guide. It is advised not to wait until the last minute.
4. Many GCI (state) winners are eligible to be sent on to NGC by the GCI Awards Chairman. The GCI Awards Chairman is the **ONLY** representative to send awards on to NGC. Consider the descriptions as found in *The National Gardener*, Sept/Oct., Fall issue or issues of subsequent odd number years, or the National Garden Club website (<http://www.gardenclub.org/Awards.aspx>) when compiling your 3-page GCI Award Application or Book of Evidence required in Flower Show Awards.
5. Carefully read *Garden Glories* taking note of state award additions and corrections. The State Award Guide is listed under forms on the GCI website **[gardenclubsofillinois.org](http://gardenclubsofillinois.org)**.
6. Updated information is often included in the State President's mailings, *Garden Glories*, and in the Members e-mail Bulletin. **Club Presidents are also encouraged to alert their Award Chairmen of any new information.**
7. **Please note the deadline dates!** Clubs will fail to win an award because the deadline is missed and required materials are **not postmarked on the appropriate date.**

The GCI Awards Chairman is responsible for all State, Region and NGC awards. The GCI Awards Chairman name and email address appear in the *Garden Glories* board roster. Contact him/her directly whenever you need assistance pertaining to awards. All necessary forms are on the GCI website. All applications for awards go to him/her, with the exception of special awards that may be handled instead by special chairmen and some youth-related awards. Contact the GCI Awards Chairman if you have questions or need assistance.

**Your club and members deserve to be recognized and The Garden Clubs of Illinois, Inc. wants to see what is being done in our state clubs and recognize their efforts with an award when merited.**

## STATE AWARD RULES

1. The state award year is from January 1 through December 31. For awards which include activities continuing after the stated deadline, the application should include the schedule of activities for the complete year. **Awards requiring 3-page applications should also cover the complete year.**
2. Questions regarding any award should be directed to the GCI Award Chairman or special chairman identified for a specific award.
3. Follow the rules regarding Flower Show Book of Evidence (**if required**) as outlined on pages 13-14.
4. Only individuals, garden clubs, etc. that are members in good standing of The Garden Clubs of Illinois, Inc. are eligible for awards.
5. Non-members are eligible for awards or certificates when specified as eligible for a particular award.
6. Affiliates with paid memberships are eligible for Special Achievement Awards as determined by the GCI board and GCI Award Chairman.
7. Eligible applicants (club, district, councils, and individuals) may submit more than one application for an award if all qualifications are met.
8. If a continuing project, **the Award Application** must be based on work accomplished during the current award year.
9. In the event a project may be eligible for several awards, **the GCI Award Application form and application** submitted to support the data for each award being applied for must focus on that particular award. Each application must be different.
10. An individual, club, district, or council that wins a top award in any category may compete for the same award the following year, unless otherwise specified.
11. Youth Garden Clubs must be sponsored by an adult club to be eligible for awards.
12. A GCI Award Coversheet must be included with each award application except those noted above. The PDF form must be used, and is available on the GCI website.
13. The GCI Awards Chairman has the Flower Show Evaluation Forms for flower show judges. Three separate signed evaluation forms are necessary and should be obtained **at least 60 days before the show**. **Contact the GCI Awards Chairman in advance to determine who will serve as a member of the Evaluation Judges. Completed Judges Evaluation forms are mailed by Judges directly to the GCI Awards Chairman.** The GCI Award Chairman includes these forms in the Flower Show Book of Evidence.
14. Forms for Award #10 (Educational Exhibit), #12 (Design/Table Design) and Award #13 (Staging) are available on the GCI website.

## **CLUB YEARBOOKS**

### **Criteria for Preparing and Scale of Points**

State award winning yearbooks will be forwarded to the Central Region Awards Chairman for competition. Include GCI Award Application with Yearbook.

#### **FORMAT – 15 points**

1. Book Structure **(3 pts)**
  - a. Practical
  - b. Convenient Size
  - c. Durable
  - d. Neat
2. Arrangement of Content
  - a. Cover **(2 pts)** (If a 3-ring binder is used, substitute with paper cover. Include required information on cover and note accordingly.)
  - b. Name of Club **(2 pts)** (town, state, year)
  - c. Subsequent pages **(6 pts)** These may include (in any order most useful to members): club officers; club membership roster with complete mailing addresses and telephone numbers; names, themes and email contact of GCI President, District Director, Central Region Director and NGC President; Events Calendar
3. Options **(2 pts)**
  - a. Club's choice to include bylaws, budget, fund raising, roll call.

#### **PROGRAMS – 50 points**

Programs are judged upon quality and balance of programs. Study on a variety of GCI and NGC goals and objectives such as: Bees, Birds, Blue/Gold Star Memorials, Butterflies, Civic Achievement, Conservation, Environment, Flower Shows, Floral Design, Historic Preservation, Horticulture, Horticulture Therapy, Landscape Design, Legislation, Litter Control, Roadside Beautification, US & World Gardening, Wildflowers, Youth, etc.

1. At least seven meetings a year **(3 pts)**
2. Date, location/address, time of meeting **(3 pts)**
3. Speaker's name, qualifications (brief), program title **(4 pts)**
4. Programs, workshops, tours furthering NGC goals & objectives **(40 pts)**  
Give brief word description (lecture, slides, demonstration, hands-on workshop, etc.)

#### **PROJECTS – 35 points**

Judged upon scope of project(s). Projects should involve actual membership participation that benefits the community and furthers NGC, CR and GCI goals and objectives, not including fund raising or social activities).

1. List Continuing and New Projects **(15 pts)**
2. Description of projects **(10 pts)**  
*Briefly describe who benefits, how the community benefits, how members participate, describe what members do as part of the project, location of project, list chairman, etc.*
3. List of donations including grants, in-kind, sales, etc. **(10 points)**

#### **TOTAL POINTS – 100**

## HOW TO PREPARE A FLOWER SHOW BOOK OF EVIDENCE

Please remember that only GCI (and by extension NGC) Flower Show Achievement Awards require a specific Book of Evidence. (BOE) Preparation of an acceptable award-winning Book of Evidence is an integral part of the work of the Club's award or flower show chairman. Books of Evidence for Flower Shows held on or before October 20 must be postmarked by November 1 and mailed to the GCI Awards Chairman.

Exception: For Flower Shows held after October 20, the deadline is January 1; however, the GCI Awards Chairman MUST be notified by November 1 of the intent to submit an award application by January 1 for events held between October 20 and December 31.

Award application forms may be obtained from the GCI website.

Follow the application guidelines available on the NGC website at:

<https://gardenclub.org/sites/default/files/2021-08/flower-show-achievement-details.pdf>

Flower Show Achievement Application can be found at:

<https://gardenclub.org/sites/default/files/2021-10/fsa-form-1-application.pdf>

Flower Show Achievement Award scoring matrix can be found at:

<https://gardenclub.org/sites/default/files/2022-01/fs-achievement-award-evaluation-form.pdf>

Applications may be submitted in an appropriate binder or electronically per the instructions on the NGC Website.

## **PUBLICATIONS**

(Scale of points and criteria for submitting award)

### **PRESENTATION – 5 points**

Include separate summary indicating brief description of publication or communication, club membership, percentage of club participation. No limit on number of pages (read award details for category on page 14). Submit in an envelope.

### **ACHIEVEMENT – 65 points**

Educational; informative; accuracy; clarity of subject; quality of printing; photography; and/or graphics; voice delivery; coverage received; general appeal.

### **PROMOTES GCI/CR/NGC OBJECTIVES – 15 points**

### **RECORD/DOCUMENTATION – 15 points**

Number of copies distributed/sold, how distributed, financial information: cost of publishing, price if sold, use of profits, market seen/heard, recognition from radio/TV station.

## GCI Awards Listing

### FLOWER SHOW AWARDS

(A Book of Evidence is required for all Flower Show Achievement Awards – unless otherwise noted. Refer to pages 13-14 in this guide for directions on “How to Prepare a Flower Show Book of Evidence”)

More than one (1) award may be given in a category to any club scoring more 95 or more points on their Flower Show Books of Evidence. All books scoring 95+ points will be sent on to NGC, Inc.

Club may apply for **only one** (1) Flower Show Award.

**All Clubs scoring 95+ points will receive a Certificate.**

- 1a. Club Standard Flower Show
- 1b. Club Holiday Standard Flower Show
- 1c. Club Patriotic Standard Flower Show
- 1d. Club Petite Standard Flower Show

#### **BEST STANDARD FLOWER SHOW (1a, 1b, 1c or 1d)**

**First Place - \$30.00 / Second Place - \$20.00 / Third Place - \$10.00**

- 2a. Club Small-Standard Flower Show
- 2b. Club Holiday Small-Standard Flower Show
- 2c. Club Patriotic Small-Standard Flower Show
- 2d. Club Petite Small-Standard Flower Show

#### **BEST SMALL-STANDARD FLOWER SHOW (2a, 2b, 2c, or 2d)**

**First Place - \$30.00 / Second Place - \$20.00 / Third Place - \$10.00**

3. Near-Clubs (2 or more) NGC Flower Show
4. Council NGC Flower Show
5. District NGC Flower Show
6. Horticulture Specialty Flower Show
7. Design Specialty Flower Show
8. Plant Society Show Co-Sponsored by GCI club/council/district
  
9. **ILLINOIS JUDGES COUNCIL FLOWER SHOW SCHEDULE AWARD.** Given for best NGC flower show schedule. ***Use Award Application Coversheet and send to current Judges Council Chairman by January 1.*** No other requirements. NGC Schedule Scale of Points (Handbook, page 133-136) will be used.  
First Place: \$35.00 Second Place: \$20.00
  
10. **FLOWER SHOW EDUCATIONAL EXHIBIT AWARD.** Certificate for the best exhibit in a standard flower show staged by an individual/s or organization. Book of Evidence NOT required. Submit award application form with pictures and descriptions of educational exhibit, date and theme of show, title of class, and any award/s won.

11. **EMILY RISING STANDARD SHOW AWARD.** To a sponsoring club who staged an NGC Flower Show in 2022 but hadn't staged a show since 2017 or before **and** applied for a 2022 GCI Flower Show Award in listed above (1a-d, 2a-d, 6, 7). Submit Award Application for this Award along with your application for the GCI Flower Show Award. **\$50 to winning entry.**

**12A. TABLE DESIGN AWARD FOR INDIVIDUAL EXHIBITOR TABLE DESIGNS IN AN NGC FLOWER SHOW.**

Submit picture/s of winning design with caption/s, ribbon/s won, name and date of show, and plant material used, along with Award Application Form. Sponsored by GCI in memory of Veva Schreiber. **\$25.00 to winning entry:**

1. Functional Table
2. Exhibition Table

**12B. DESIGN EXCELLENCE AWARD FOR INDIVIDUAL EXHIBITOR DESIGN IN A STANDARD FLOWER SHOW.**

Submit picture/s of winning design with caption/s, ribbon/s won, name and date of show, and plant material used, along with Award Application Form. Sponsored by the Springfield Civic Garden Club. **\$25 to winning entry.**

13. **STAGING AWARD FOR AN NGC FLOWER SHOW.** Submit picture/s of staging with caption/s, name (theme) and date of show, and staging used, along with Award Application Form. Sponsored by GCI in memory of Veva Schreiber. **\$25.00 to winning entry.**

- A. Club with less than 40 members
- B. Club with 41 or more members
- C. Council or group of clubs.

**CIVIC PROJECT AWARDS**

21. **BLUE/GOLD STAR MEMORIAL OR BYWAY MARKER LANDSCAPING MARKER PROJECT.** For the design or redesign of landscaping of a Blue/Gold Star Memorial. Completed project that may have been continuous but stresses the landscaping of the marker completed in the current award year. May be part of a highway department rest area maintained by department. **\$25 to winning entry.**

22. **MYRTLE R. WALGREEN MEMORIAL AWARD FOR CIVIC PROJECT.** Given by her daughter, Mrs. Ruth Stephen. **First Prize: \$100.00, Second Prize: \$75.00, Third Prize: \$50.00 (Adjusted for ties.)**



- 23. CIVIC CONCERN.** Certificate for continuing civic project. If a landscaping project, please include a landscape plan in addition to the 3-page application form. **Sponsored by District IX. \$25.00 to winning entry in each membership division.**
- 24. RUTH Y. BENSON MEMORIAL AWARD.** To a club that contributes the greatest service to the Lincoln Memorial Garden, or any other nature center/preserve in Illinois during the year, emphasizing member participation and publicity. **\$25.00 to winning entry.**
- 25. LANDSCAPE DESIGN COUNCIL AWARD.** Recognition of landscape design or redesign of property for public enjoyment. by the club in your hometown Obtain application form from the GCI Landscape Design Council Chairman. Sites must be reviewed by the Council before and after. Book of Evidence due October 1.
- a. \$65.00 for design of 150 or more square feet
  - b. \$25.00 for design of less than 150 square feet
- 26. MABEL M.A. FITZSIMMONS MEMORIAL AWARD FOR HOME GARDEN OR NURSING HOME GARDEN DESIGN.** Design of a club member's garden could be front, back or both. Photos can show any season. Gardens designed by professional landscape firms are not eligible. **\$50 to winning club in each category.**
- a. For club member in District I, II, VIII, or IX
  - b. For club member in District III, IV, V, or VII
- 27. ARBOR DAY.** Certificate to club(s) for an Arbor Day project or program of exceptional merit. Member participation and publicity emphasized.
- First Place - \$30.00 / Second Place - \$20.00 / Third Place - \$10.00**
- 28. GARDENING CONSULTANTS' COMMUNITY PROJECT.** To an individual or club for a garden project that benefits the community. Continuing projects are eligible, excluding Earth Day or Arbor Day Projects. *Sponsored by the Gardening Consultants Council.* **\$50 to winning entry.**
- 29. WORLD GARDENING.** To club(s) for most outstanding program of activity in World Gardening. **\$25 to winning entry.**
- 30. THE GARDEN CLUB OF DOWNERS GROVE MILITARY MEMORIAL AWARD.** To an overall winning club that designs or redesigns a garden using perennials and/or annuals at a site designated to honor the military. Must be maintained by the club, stressing member participation. Club may work in conjunction with the American Legion, VFW, or other military organization. Application must include before and after pictures. (Note: Blue Star Memorial Markers are not eligible for this award.) Sponsored by the Garden Club of Downers Grove. **\$100 to winning entry**
- 31. GARY R. REWERTS BLUE STAR MEMORIAL AWARD.** For the placement of a new Blue Star Memorial Highway Marker at an interstate rest area in Illinois. May be awarded to single member garden club or group of member clubs. Sponsored by Kathy Rewerts. **\$100 to winning entry.**

**32. FOOD BANK/PANTRY SUPPORT (New Award based on Central Region Unifed Project)**

- A.** To the individual and club (per capitata) that donates the most garden produce. Submit pounds of produce with application. **\$25 to winning entry.**
  - i. Individual
  - ii. Club
- B.** To the club that donates most the food and non-perishable food items to a food bank or food pantry/pantries. Submit approximate list of items and/or pounds donated. **\$25 to winning entry.**

**CONSERVATION AWARDS**

- 40. CONSERVATION.** To club for an outstanding conservation effort. **\$25.00 to winning club in each membership division.**
- 41. VIOLET M. DAWSON AWARD FOR ENVIRONMENTAL EDUCATION.** To clubs having the most comprehensive environmental education program. May include Youth. Funded by Diane Dawson. **Two \$25 awards to winning entries.**
- 42. BIRD PROTECTION. (Revised)** To the club having the most influential project relating to bird protection, such as creating and maintaining or improving bird habitat, educating the public, positively affecting legislation, or financing that raises public awareness about protecting native bird populations. Sponsored by Darien Garden Club. **\$50 to winning entry.**
- 43. HISTORIC PRESERVATION.**
  - a. To a club for tasteful, distinctive holiday decorations in a historic building, house, or mansion. Must conform to the building's period. **\$50 to winning entry.**
  - b. To a club for dedication to the continuing challenge of reclaiming and preserving a historic site. The site does not have to be developed but must be recognized by local, state, or national authorities. **\$50 to winning entry.**
  - c. To club/s for an outstanding effort to beautify the community during a holiday season with holiday decorations. **\$50 to winning entry.**
- 44. NEW PRESIDENT'S PROJECT: "PLANT AMERICA....STARTING AT HOME"**  
To a club member whose planting project/s and/or beautification on private property has made a visual impact in the community. Before and after photos required. **\$50 to winning entry.**
- 45. WILDFLOWER AND ROADSIDE IMPROVEMENT AWARD.** Certificate to club(s) for planting wildflowers on public rights-of-way. Sponsored by the Garden Club of Decatur. **\$100 to winning entry.**
- 46. MARY ZGONENA MEMORIAL AWARD FOR ENVIRONMENTAL EXCELLENCE.**  
To a club(s) for comprehensive new or continuing programs relating to the environment. **\$100 to winning entry.**

#### **47. PLANTING FOR POLLINATORS**

- a. To a club or youth garden club for preparing and maintaining a Butterfly Garden. **\$25 to winning entry.**
- b. To a club specifically addressing Planting for Pollinators in any new or existing garden on public property including Blue/Gold Star Markers. **\$25 to winning entry.**
- c. To a club specifically addressing the “Milkweed for Monarchs” project. Award is based on the club with the highest percentage of club members participating (need to provide actual headcount in award documentation) in all “Milkweed for Monarchs” projects. Sponsored by Cress Creek Garden Club. **\$50 to winning entry.**

**48. ENVIRONMENTAL CONSULTANTS AWARD.** To an individual or garden club that promotes a project in any or all of the following activities: participation, education, legislation, and/or financing that would raise the public awareness of what can be done to protect endangered species or control invasive species. **\$25 to the winning entry.**

**49. JODY BAILEY AWARD FOR WATER CONSERVATION AWARENESS.** To a club member or members who develop and present a program that endeavors to identify local, state, and national water problems that affect their community at the present time. **\$100 to winning entry.**

## YOUTH ACTIVITIES AWARDS

(Youth awards may apply to preschool, elementary, middle and high school students.)

50. **CARMEN AND JESSIE MCDONALD.** To a club sponsoring the a youth garden club in 2022; award based on activities, club members and youth garden club members. **\$50 to winning entry.**
51. **ARBOR DAY CITATION.** To a garden club who hold an Arbor Day program with emphasis on youth participation. Note member participation. **\$25 to winning entry.**
52. **YOUTH CLUB LEADERSHIP AWARD.** Certificate may be awarded to the individual who has given outstanding service as a leader of a youth club.
53. **YOUTH ACTIVITIES.** To the Club that participates with youth in three ways – entering youth contests, submitting photos of youth to the GCI website, and participating with a group of youth in a gardening activity. **\$50 to winning entry.**

## ANNUAL YOUTH-RELATED AWARDS

(Details are in the Fall Issue of *GardenGlories*.)

Details are also available on the NGC website.)

**All entries are due January 10.**

**SMOKEY BEAR AND WOODSY OWL POSTER CONTEST.** Entries are judged by the member garden club and winning posters mailed to GCI Youth Activities Chairman. **\$25.00 winner for each grade level.**

**YOUTH POETRY AND SCULPTURE CONTESTS.** Various poetry and sculpture contests are offered by NGC. **\$25 award for winning entries.**

## GARDEN CLUB AWARDS

60. **BEST YEARBOOK.** Two types of yearbook awards are given. Submit two copies: one copy to your District Director and one copy to GCI Awards Chairman with a state award application form. *Criteria for preparing a yearbook and the scale of points used for judging yearbooks are on page 14 of this guide.* **DEADLINE FOR SUBMITTING YEARBOOKS TO GCI AWARDS CHAIRMAN AND DISTRICT DIRECTOR/AWARDS CHAIRMAN IS OCTOBER 1.**

GCI Certificate to best yearbook judged by club size. Send one copy to the GCI Awards Chairman.

### **\$25.00 to winning club in each membership division**

- i. Small Club: 20 members and under
- ii. Medium Club: 21-50 members
- iii. Large Club: 51+ members

61. **BEST HISTORY.** Certificate for history that includes activities up to the present time. Photographs allowed. Club history should be submitted in a manila envelope with state award application form attached with paper clip. No scrapbooks or oversized books.
- a. Small Club: 20 members and under
  - b. Medium Club: 21-50 members
  - c. Large Club: 51+ members
62. **CLUB ACHIEVEMENT.** Form is revised yearly by GCI President and available on GCI website. Club President should complete after reviewing club's activities for the current year. Points listed after each activity are the maximum allowed. Send to GCI Awards Chairman by December 15.
- a. Blue Seal for 200+ points
  - b. Purple Seal for 300+ points
  - c. Gold Seal for 400+ points
63. **CLUB HORTICULTURE.** Form is revised yearly and available on GCI website. Complete form and return to GCI Awards Chairman by December 15.
- a. Gold Seal for 250+ points
  - b. Silver Seal for 150+ points
64. **NAPERVILLE GARDEN CLUB SCHOLARSHIP.** For giving the most per capita to scholarships at the college level and beyond in conservation and horticulture. **\$25 to winning entry in each category.**
- a. Small club up to 100 members
  - b. Large club 100 members and more

- 65. MARY WALKER AWARD FOR ACCOMPLISHMENT.** To club that has joined GCI within the last five years and has established an impressive record of accomplishment in all phases of club activity. **\$35 to winning entry.**
- 66. GCI GARDEN WALK.** For a garden walk highlighting the objectives of GCI and NGC. Must be part of a club project and open to the public,, and not a program. Sponsored by South Barrington Garden Club. **\$25 to winning entry.**
- 67. GLORIA GREENE ADVANCED DESIGNER AWARD.** To member clubs providing a program/workshop on floral design. Membership participation required. **\$50 to winning entry in each category.**
- a. Club with 50 members or less
  - b. Club with 51 or more members
  - c. Council or group of clubs
- 68. THE GARDEN CLUB OF DOWNERS GROVE NATIONAL GARDEN WEEK AWARD.** \$To an overall winning club that promotes National Garden Week in their community. Examples may include pictures, publicity, proclamations, working with local civic organizations, and/or other activities such as placing floral arrangements in public buildings, having garden tours, etc. **\$100 to winning entry.**
- 69. THE DES PLAINES GARDEN CLUB AWARD FOR BEST PROMOTION OF YOUR LOCAL GARDEN CLUB IN A PUBLIC SPACE.** Presented to an overall winning club who has effectively promoted their garden club (using a display case, exhibit booth, etc.) to present their past and present achievements, provide a bit of club history, current projects, initiatives, and having them displayed in a public location (i.e., local community center, public library, city hall building, train station, etc.) as a way of spreading the good word about their club and possibly securing new members. Award submission should include photos along with all GCI required award documentation. **\$25 to winning entry.**
- 70. GCI “GARDEN CLUB OF THE YEAR” AWARD.** GCI will determine the winner(s) based on awards submitted. **\$25 to winning club in each membership level.** This award is contingent on a club:
- a. Submitting at least five (5) GCI Awards: specifically awards #60 Yearbook; #62 Club Achievement; #63 Club Horticulture; #83b. – Newsletter and at least one award from any one of the following categories: Flower Show, Civic, Conservation, Club, Garden Therapy or Youth (of course more than one award can be submitted).
  - b. Members attending: State Convention; Summer Meeting and GCI sponsored schools
- 71. GCI GARDEN CLUB ANNIVERSARY CELEBRATION. (NEW).** To the club who has promoted their club’s anniversary throughout the year with specials event. Award submission should include photos along with required documentation. **\$25 to winning entry.**

## **PUBLICATION AWARDS**

*(See pages 17 for scale of points and rules applicable to these awards.)*

**80. CERTIFICATE OF MERIT FOR BEST GARDEN-ORIENTED PROGRAMS IN RADIO, TV, OR VIDEO.**

**81. CERTIFICATE OF MERIT FOR BEST VIDEO/CD SUITABLE FOR CLUB PROGRAMS.**

**82. CERTIFICATE OF MERIT FOR DISTRICT AND CLUB PUBLICATIONS.** Submit consecutive issues of each publication published in the awards year under one management. Copies may be submitted in a folder or manila envelope with state award application and a 3-5 sentence summary typed on a separate sheet. Summary should include brief description of publication, club membership, and financial information including number of copies printed/sold, how distributed, cost of publishing, price if sold, use of profits.

- a. Leaflet, a single sheet, if folded not more than 4 pages
- b. Newsletter/Magazine/Bulletin - minimum three times per year
  - i. 1-2 pages
  - ii. 3-12 pages
  - iii. 13-24 pages
  - iv. 24+ pages
- c. Other Publications (No periodicals, notices, or flyers with one-time events).
  - i. Educational
  - ii. Manuals
  - iii. Websites (submit URL)
  - iv. Social Media pages (submit name and location)
  - v. Digital Media Presentation
  - vi. Other

## **GARDEN THERAPY AWARDS**

**90. CERTIFICATE OF MERIT FOR BARRIER-FREE GARDENING.** Given to a club(s) for establishing and/or financing or promoting programs or activities for barrier-free gardening for the physically challenged in institutional settings.

**91. GARDEN THERAPY.**

- a. To club with regular on-going project(s). **\$25 to winning entry in each category.**
  - i. Must include patient/resident/student participation.
  - ii. Patient/resident/student participation not required.
- b. Certificate to individual in club who plans and conducts therapy projects on a regular basis; must include patient/resident/student participation. **\$25 to winning entry.**

## MEMBERSHIP AWARDS

**100.MEMBERSHIP DISTINCTION.** Certificate to club showing the greatest number of new members between January 1 and December 31 of awards year. **Will be determined by GCI 1<sup>st</sup> Vice President and current end-of-year membership totals on file at GCI headquarters.**

- a. Small Clubs 1-20 members
- b. Medium Clubs: 21-50 members
- c. Large Clubs: 51+ members

**101.MARGARET TAMILLO.** Certificate to the garden club with the greatest percentage increase in membership as of December 31. Will be determined by GCI 1st Vice President and current end-of-year membership totals on file at GCI headquarters

**102.CLUB RECRUITMENT.** Certificate to clubs participating in adopt-a-club program or recruiting a club into GCI. Must sponsor and present more than one program for the new club.

**103.INDIVIDUAL RECRUITMENT.** Certificate to clubs for outstanding membership recruitment project.

## SPECIAL AWARDS

**150. REGIONAL ENTRY.** Certificate.

**151. NATIONAL ENTRY.** A single green rosette given to the club for any and all awards submitted by GCI to NGC for awards which meet the requirements for an NGC award.

**152. STEPHANIE GREENE MEMORIAL AWARD.** Certificate and a \$70.00 Class Credit for any of the GCI schools (Environmental School, Flower Show School, Gardening School and Landscape Design School.) Is awarded to a club member who has represented their club well in the community for many years.

## PRESIDENTIAL CITATIONS

May be given by the GCI President at the GCI Annual Meeting or GCI Summer Meeting to persons who have performed outstanding service to GCI.